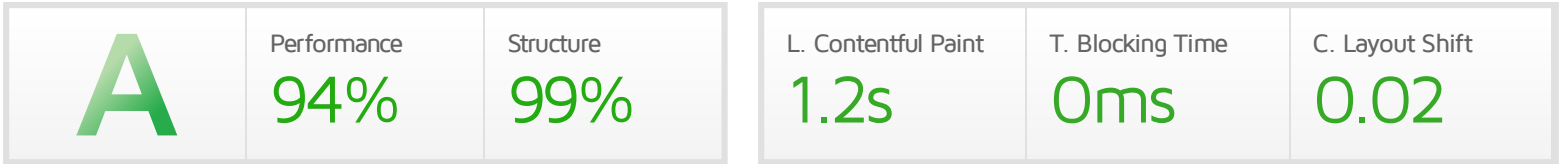


Performance Report for: https://www.lenaholfve.se/

Report generated: Tue, Dec 28, 2021 9:28 AM -0800
 Test Server Location: Vancouver, Canada
 Using: Chrome (Desktop) 90.0.4430.212, Lighthouse 8.3.0



Top Issues

IMPACT	AUDIT	
Med-Low	Avoid an excessive DOM size	1,129 elements
Low	Eliminate render-blocking resources	Potential savings of 63ms
Low	Avoid enormous network payloads	Total size was 1.24MB
Low	Properly size images	Potential savings of 285KB
Low	Serve static assets with an efficient cache policy	Potential savings of 5.08KB

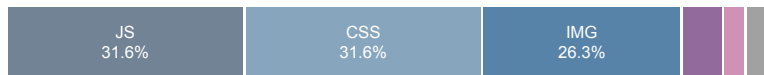
Page Details



Total Page Size - 1.24MB



Total Page Requests - 38



HTML JS CSS IMG Video Font Other

How does this affect me?

Today's web user expects a fast and seamless website experience. Delivering that fast experience can result in increased visits, conversions and overall happiness.

As if you didn't need more incentive, **Google has announced that they are using page speed in their ranking algorithm.**

About GTmetrix

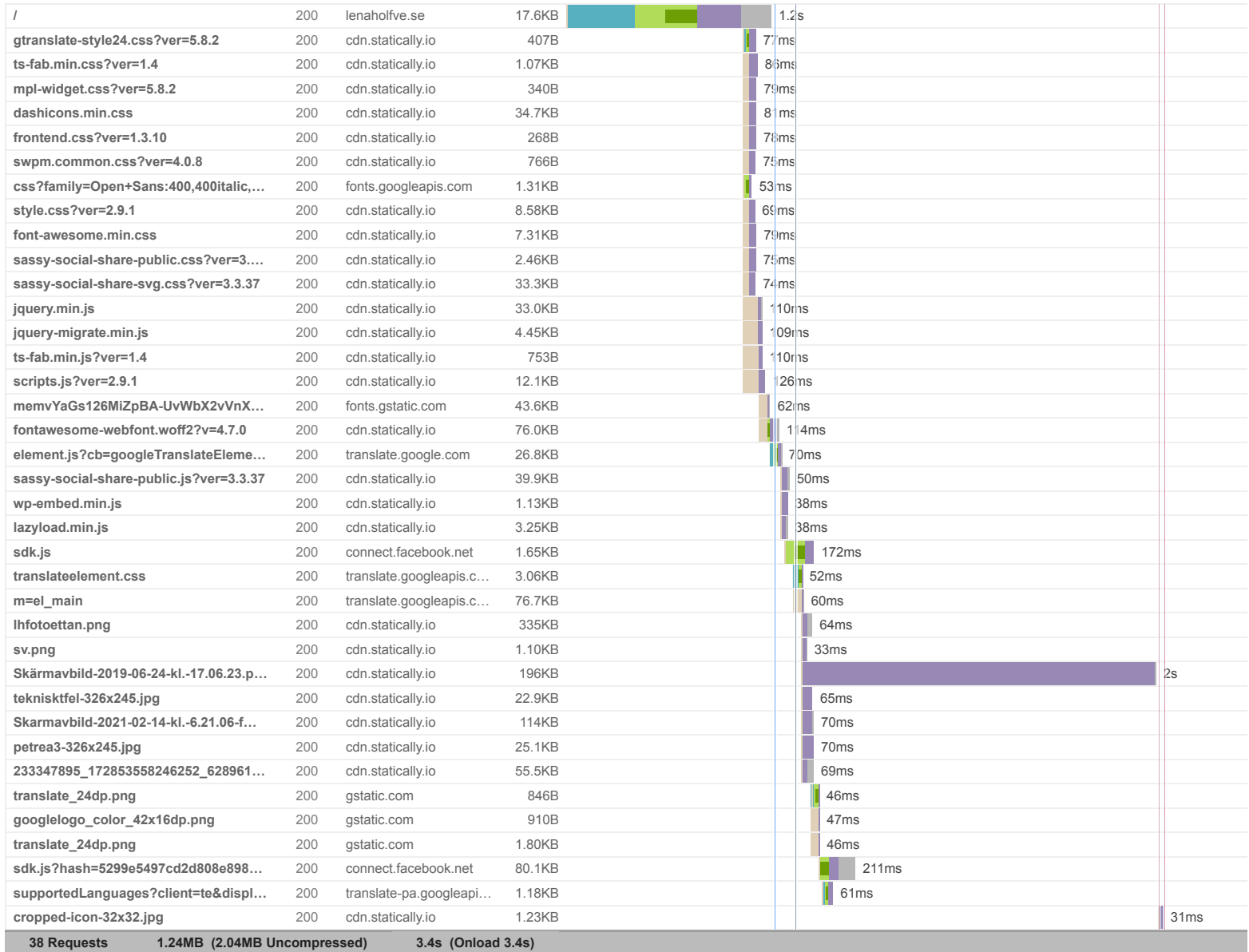
CARBON60
THE MANAGED CLOUD COMPANY

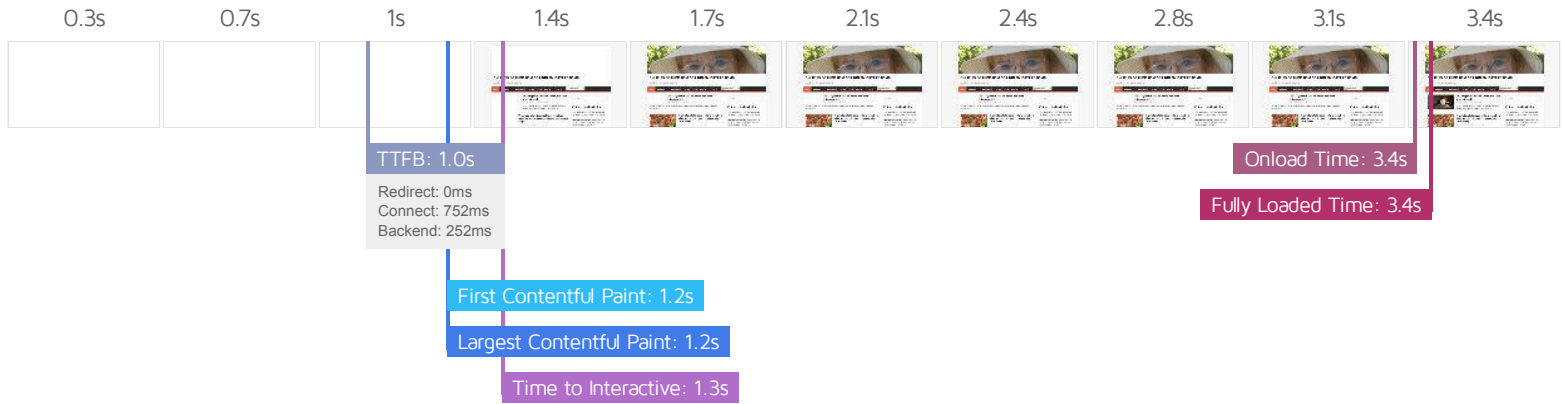
GTmetrix is developed by the good folks at Carbon60, a Canadian hosting company with over 25 years experience in web technology.

<https://carbon60.com/>

The waterfall chart displays the loading behaviour of your site in your selected browser. It can be used to discover simple issues such as 404's or more complex issues such as external resources blocking page rendering.

En studiegrupp som ger dig en bättre sömn – Därför att du förstår samband





Performance Metrics

<p>First Contentful Paint</p> <p>How quickly content like text or images are painted onto your page. A good user experience is 0.9s or less.</p>	<p>OK, but consider improvement</p> <p>1.2s</p>	<p>Time to Interactive</p> <p>How long it takes for your page to become fully interactive. A good user experience is 2.5s or less.</p>	<p>Good - Nothing to do here</p> <p>1.3s</p>
<p>Speed Index</p> <p>How quickly the contents of your page are visibly populated. A good user experience is 1.3s or less.</p>	<p>OK, but consider improvement</p> <p>1.4s</p>	<p>Total Blocking Time</p> <p>How much time is blocked by scripts during your page loading process. A good user experience is 150ms or less.</p>	<p>Good - Nothing to do here</p> <p>0ms</p>
<p>Largest Contentful Paint</p> <p>How long it takes for the largest element of content (e.g. a hero image) to be painted on your page. A good user experience is 1.2s or less.</p>	<p>Good - Nothing to do here</p> <p>1.2s</p>	<p>Cumulative Layout Shift</p> <p>How much your page's layout shifts as it loads. A good user experience is a score of 0.1 or less.</p>	<p>Good - Nothing to do here</p> <p>0.02</p>

Browser Timings

Redirect	0ms	Connect	752ms	Backend	252ms
TTFB	1.0s	First Paint	1.2s	DOM Int.	1.3s
DOM Loaded	1.3s	Onload	3.4s	Fully Loaded	3.4s

IMPACT	AUDIT	
Med-Low	Avoid an excessive DOM size	1,129 elements
Low	Eliminate render-blocking resources	Potential savings of 63ms
Low	Avoid enormous network payloads	Total size was 1.24MB
Low	Properly size images	Potential savings of 285KB
Low	Serve static assets with an efficient cache policy	Potential savings of 5.08KB
Low	Ensure text remains visible during webfont load	1 font found
Low	Reduce JavaScript execution time	32ms spent executing JavaScript
Low	Reduce unused CSS	Potential savings of 68.0KB
Low	Serve images in next-gen formats	Potential savings of 650KB
Low	Reduce initial server response time	Root document took 252ms
Low	Avoid serving legacy JavaScript to modern browsers	Potential savings of 68B
Low	Avoid large layout shifts	5 elements found
Low	Avoid non-composited animations	1 animated element found
Low	Avoid chaining critical requests	11 chains found
Low	Reduce unused JavaScript	Potential savings of 152KB
N/A	Largest Contentful Paint element	1 element found
N/A	Minimize main-thread work	Main-thread busy for 1.2s
N/A	Reduce the impact of third-party code	Total size was 213KB
N/A	User Timing marks and measures	